
GROHE
MEDICAL MIXER RANGE
For LIXIL Africa

*Pure Freude
an Wasser*

GROHE
W



MEDICAL MIXERS

Features & Benefits	2
Euroeco Special	3

FEATURES & BENEFITS



GROHE EcoJoy™

This is a water saving solution which reduces the amount of water usage by 50% but still gives a full jet of water each time you turn on the tap.



GROHE StarLight™

Ensures long lasting surface quality, designed to be extremely resistant to scratches and dirt, making maintenance effortless and ensuring good as new look for years to come.

Material & Market Segments



Chrome



Health
Facilities



Hospitality



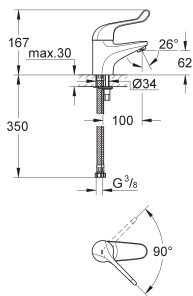
Commercial
or Industrial



Stock
Keeping
Items

EUROECO SPECIAL





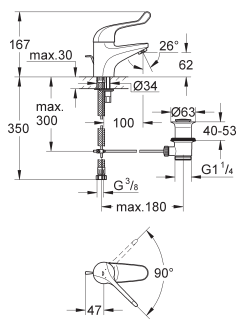
G-32789000
4005176871894



Euroeco Special single-lever safety mixer

Monobloc installation. Smooth body. GROHE StarLight chrome finish. GROHE EcoJoy technology for less water and perfect flow. Ceramic cartridge. Adjustable flow rate limiter. Adjustable temperature limiter. Adjustable minimum flow rate 6 l/min. Laminar flow straightener 9 l/min. Metal lever. Lever length 120 mm. Rapid installation system. Flexible connection hoses.

Gross weight (kg) with packaging: 1,585



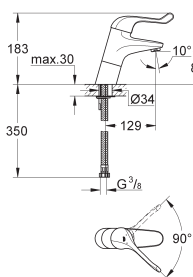
G-32788000
4005176871887



Euroeco Special single-lever safety mixer with pop-up waste

Single hole installation. Pop-up waste set 1 1/4". GROHE StarLight chrome finish. GROHE EcoJoy technology for less water and perfect flow. Ceramic cartridge. Adjustable flow rate limiter. Adjustable temperature limiter. Adjustable minimum flow rate 6 l/min. Laminar flow straightener 9 l/min. Metal lever. Lever length 120 mm. Rapid installation system. Flexible connection hoses.

Gross weight (kg) with packaging: 1.920



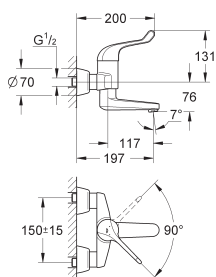
G-32790000
4005176871900



Euroeco Special single-lever safety mixer, high

Monobloc installation. Smooth body. High version. GROHE StarLight chrome finish. GROHE EcoJoy technology for less water and perfect flow. Ceramic cartridge. Adjustable flow rate limiter. Adjustable temperature limiter. Adjustable minimum flow rate 6 l/min. Laminar flow straightener 9 l/min. Metal lever. Lever length 120 mm. Rapid installation system. Flexible connection hoses

Gross weight (kg) with packaging: 1,950



G-32792000
4005176871924

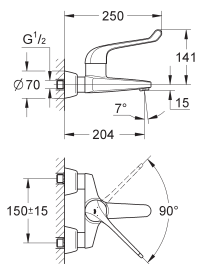


Euroeco Special wall-type safety mixer

Wall mounted. GROHE StarLight chrome finish. GROHE EcoJoy technology for less water and perfect flow. ceramic cartridge. adjustable flow rate limiter. adjustable temperature limiter. adjustable minimum flow rate 6 l/min. cast swivel spout. lockable with flow straightener 9 l/min. swivel area 90°. projection 197 mm. metal lever. lever length 120 mm. S-unions. min recommended pressure 1.0 bar.

Gross weight (kg) with packaging: 2.905





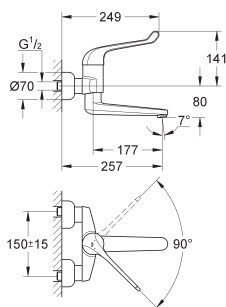
G-32795000
4005176871955



Euroeco Special safety basin mixer wall mounted

Wall mounted. GROHE StarLight chrome finish. GROHE EcoJoy technology for less water and perfect flow. ceramic cartridge. adjustable flow rate limiter. adjustable temperature limiter. adjustable minimum flow rate 6 l/min. cast spout with flow straightener 9 l/min. projection 204 mm. metal lever. lever length 170 mm. S-unions

Gross weight (kg) with packaging: 2.735



G-32793000
4005176871931



Euroeco Special wall type safety mixer

Wall mounted. GROHE StarLight chrome finish. GROHE EcoJoy technology for less water and perfect flow. Ceramic cartridge. Adjustable flow rate limiter. Adjustable temperature limiter. Adjustable minimum flow rate 6 l/min. Cast swivel spout, lockable with flow straightener 9 l/min. Projection 256 mm. Metal lever. Lever length 170 mm. S-unions. Min. recommended pressure 1 bar.

Gross weight (kg) with packaging: 3,195



20 Wright Street,
Factoria,
Krugersdorp, 1739
South Africa

National After Sales Service Number: +27 (0) 861 21 21 21

ONLINE PLATFORMS

Visit our websites and find an office/dealer/distributor closest to you.

Websites:

<http://www.lixil.co.za/>

https://www.grohe.co.za/en_za/

Social Media:



- @GROHE.Africa



- @GROHE_Africa

GROHE has a policy of continuous product development and advancements and therefore reserves the right to modify product specifications accordingly.



PART OF **LIXIL**