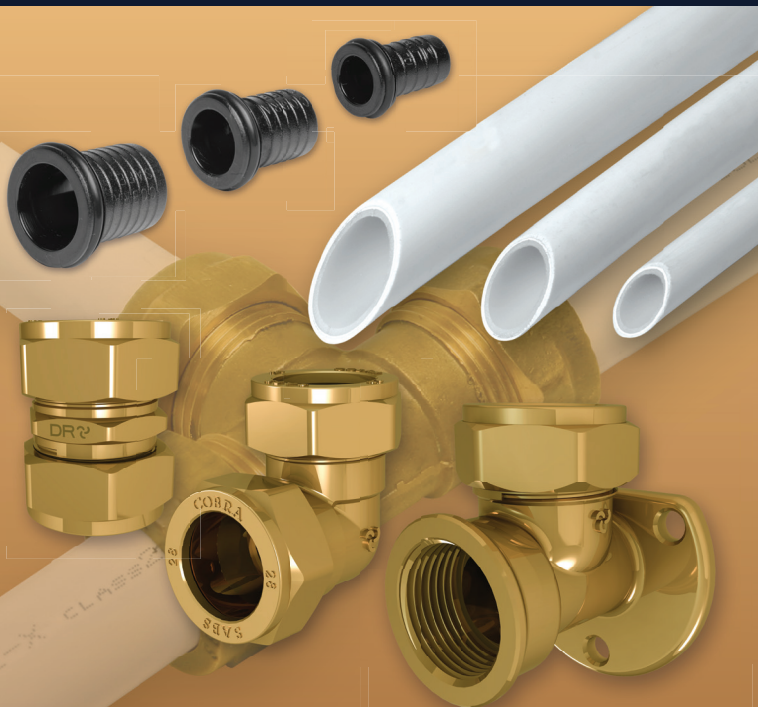


# Compression Fittings & MLP



SANS-1067-1  
2005



COBRA  
TeamAssist



COBRA  
DZR Brass

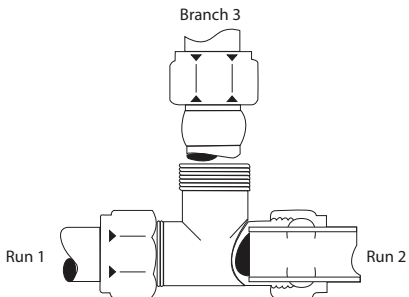


COBRA  
Genuine

## CONTENTS

---

Compression Fittings Introduction	1
Copper Tubing for Efficiency	2
Making a Compression Joint	3
Compression Fittings	4
Gate Valves	18
Stop Taps	19
Copper Tubing for Domestic Plumbing	20
Generic Features and benefits of MLP System	24
Multi Layer Pipes	25
Inserts	26
Installation Procedure	27



### Special Note

Throughout this booklet sizes for unequal ends of tees have been given in numerical order as indicated above. When ordering, use the same system, the branch size is always stated last.

All imperial sizes quoted refer to ends for BSP thread connections. All metric sizes quoted refer to nominal sizes for copper tubes to SABS.

In the compression range, both male and female connecting threads are BSP parallel.

### **Compression Fittings**

The compression ring type copper tube joining system was designed and introduced in the United Kingdom in 1933. Cobra introduced it to the South African market in the early 1950's, under the "Conex" brand at the time and in recent years under the Cobra brand.

The versatility, efficiency and joining speed, led to its rapid adoption by plumbers. The introduction of hard drawn copper tube has led to the wider use of copper tube systems in inland areas. Cobra compression fittings are suitable for use with hard drawn (SANS 460 all classes 0, 1, 2, 3) tubing as well. Inland contractors have discovered that with Cobra compression fittings they can use cheaper, less skilled labour. It is a much faster system to install than systems used traditionally, is comprehensive in range and manufactured in accordance with SABS requirements (SANS-1067-1 2005). It has the added advantage that the pipe work can be dismantled and re-assembled, should the need arise. Cobra compression fittings are ideally suited for use in emergency repairs as well, for instance with the slip couplings D-1XL-15 S/C and D-1XL-22 S/C which can be used to make a repair connection to rigid pipe work mounted close to a wall.

The fact that the complete connection is a metal to metal mechanical coupling, makes it both permanent (no organic sealing material that can deteriorate) as well as being suitable for applications where the heat and open flames, while soldering connections, can pose a hazard.

Cobra compression fittings can be used in conjunction with polyethylene pipe system, which is made up of Cobra-Safe® MLP Pipe, Cobra MLP Inserts, and Cobra Compression Fittings. The components used exclusively together, meet compliance, SANS 21003 Part 1, for multi-layer PEX pipe system.

**DZR Brass: All Cobra compression fittings are manufactured from Dezincification Resistant Brass as required by SANS 1067 Part 1**

### **Advantages of Copper Tubing Systems:**

- Excellent corrosion resistance, both internal and external
- Low in service maintenance
- Superior flow characteristics – even after many years
- Space saving
- Neat appearance when exposed
- Cost effective in terms of overall installation cost
- Light weight – facilitating ease of transport, fabrication and installation

## MAKING A COMPRESSION JOINT



1. Copper tube can be cut with a hacksaw; a fine tooth blade is best or use a roller tube cutter. Do not put too much pressure on the cutting disk.



2. Clean the ends of the tube with a file or de-burring tool, inside and outside.



3. The parts of the joint can be laid out as per picture before assembly.



4. Slide the copper tube into the Cobra compression fitting, ensuring that the tube stays firmly against the shoulder of the fitting. Tighten the cap nut by hand, ensuring the tube stays firmly against the shoulder of the fitting.



5. Following hand tightening of the cap nut, tighten with a spanner until the copper tube is hard to rotate in the compression fitting, thereafter tighten the cap nut half a turn. Inspect and pressure test the joint.

This compression joint is designed to be a metal to metal coupling, where hard drawn copper tube is used. Using Cobra Safe MLP systems, you will need the Cobra Safe inserts in order to complete the coupling.

### D-1XS

**Straight Coupler.**  
Copper to Copper connections.



Product Code:	SAP Code:	Barcode:
D-1XS-15	FCOMPC15-7FT0155	6002194037132
D-1XS-22	FCOMPC22-7FT0155	6002194004202
D-1XS-28	FCOMPC28-7FT0155	6002194020431
D-1XS-35	FCOMPC35-7FT0155	6002194020448
D-1XS-42	FCOMPC42-7FT0155	6002194020455
D-1XS-54	FCOMPC54-7FT0155	6002194020462

* Also available	D-1XL-15S/C	FCOMPL15-7FT0155	6002194020417
	D-1XL-22S/C	FCOMPL22-7FT0155	6002194020424

Slip Couplings (without internal pipe stops)  
for repairs or alterations to rigid pipework.

### D-2XS

**Straight Male Coupler.**  
Copper to Male Iron connections.



Product Code:	SAP Code:	Barcode:
D-2XS-15	FCOM2C15-7FT0155	6002194037194
D-2XS-22	FCOM2C22-7FT0155	6002194037200
D-2XS-28	FCOM1C28-7FT0155	6002194020561
D-2XS-35	FCOM1C35-7FT0155	6002194020578
D-2XS-42	FCOM1C42-7FT0155	6002194020585
D-2XS-54	FCOM1C54-7FT0155	6002194020592

15mm x 1/2"; 22mm x 3/4";  
28mm x 1"; 35mm x 1 1/4";  
42mm x 1 1/2"; 54mm x 2".

## COMPRESSION FITTINGS

### D-3XS

**Straight Female Coupler.**  
**Copper to Female Iron connections.**



Product Code:	SAP Code:	Barcode:
D-3XS-15	FCOM3C15-7FT0155	6002194037316
D-3XS-22	FCOM3C22-7FT0155	6002194037323
D-3XS-28	FCOM2C28-7FT0155	6002194020752
D-3XS-35	FCOM2C35-7FT0155	6002194020769
D-3XS-42	FCOM2C42-7FT0155	6002194020776
D-3XS-54	FCOM2C54-7FT0155	6002194020783

15mm x 1/2"; 22mm x 3/4";  
28mm x 1"; 35mm x 1 1/4";  
42mm x 1 1/2"; 54mm x 2".

### D-1RXS

**Reducing Straight Coupler.**  
**Copper to Copper connections.**



Product Code:	SAP Code:	Barcode:
D-1RXS-22X15	FCOMPC03-7FT0155	6002194037118
D-1RXS-28X22	FCOMPC04-7FT0155	6002194037125



---

## COMPRESSION FITTINGS

---

### D-4XS

---

Elbow 90°.  
Copper to Copper connections.



Product Code:	SAP Code:	Barcode:
D-4XS-15	FCOM3E15-7FT0155	6002194037385
D-4XS-22	FCOM2E22-7FT0155	6002194037392
D-4XS-28	FCOM1E28-7FT0155	6002194020790
D-4XS-35	FCOM1E35-7FT0155	6002194020806
D-4XS-42	FCOM1E42-7FT0155	6002194020813
D-4XS-54	FCOM1E54-7FT0155	6002194020820

### D-4RXS

---

Reducing Elbow 90°.  
Copper to Copper connections.



Product Code:	SAP Code:	Barcode:
D-4RXS-22X15	FCOMPE19-7FT0155	6002194037378

## COMPRESSION FITTINGS

### D-2RXS

Reducing Male Straight Coupler.  
Copper to Male Iron connections.



Product Code:	SAP Code:	Barcode:
D-2RXS-1X22	FCOMPC16-7FT0155	6002194020554
D-2RXS-3/4X15	FCOMPC17-7FT0155	6002194037187

### D-3RXS

Reducing Straight Coupler.  
Copper to Female Iron connections.



Product Code:	SAP Code:	Barcode:
D-3RXS-3/4X15	FCOMPC18-7FT0155	6002194037309

### D-8XS

**Male Elbow 90°.**

**Copper to Male Iron connections.**



Product Code:	SAP Code:	Barcode:
D-8XS-15	FCOM4E15-7FT0155	6002194037453
D-8XS-22	FCOM3E22-7FT0155	6002194037460
D-8XS-28	FCOM2E28-7FT0155	6002194020929
D-8XS-35	FCOM2E35-7FT0155	6002194020936
D-8XS-42	FCOM2E42-7FT0155	6002194020943
D-8XS-54	FCOM2E54-7FT0155	6002194020950

15mm x 1/2"; 22mm x 3/4";  
28mm x 1"; 35mm x 1 1/4";  
42mm x 1 1/2"; 54mm x 2".

### D-10XS

**Female Elbow 90°.**

**Copper to Female Iron connections.**



Product Code:	SAP Code:	Barcode:
D-10XS-15	FCOMPE15-7FT0155	6002194037453
D-10XS-22	FCOMPE22-7FT0155	6002194004325
D-10XS-28	FCOMPE28-7FT0155	6002194020479
D-10XS-35	FCOMPE35-7FT0155	6002194020486
D-10XS-42	FCOMPE42-7FT0155	6002194020493
D-10XS-54	FCOMPE54-7FT0155	6002194020509

15mm x 1/2"; 22mm x 3/4";  
28mm x 1"; 35mm x 1 1/4";  
42mm x 1 1/2"; 54mm x 2".

## COMPRESSION FITTINGS

### D-33XS

Wallplate Elbow 90°.

Copper to Female Iron connections.



Product Code: SAP Code:

Barcode:

D-33XS-15

FCOM1E15-7FT0155

6002194037330

D-33XS-22

FCOM1E22-7FT0155

6002194037347

15mm x 1/2"; 22mm x 3/4".

### D-37XS

Swivel Female Elbow 90°.

Copper to Female Iron connections.



Product Code: SAP Code:

Barcode:

D-37XS-15

FCOM2E15-7FT0155

6002194037354

15mm x 1/2".

### D-10RXS

Reducing Female Elbow 90°.  
Copper to Female Iron connections.



Product Code:	SAP Code:	Barcode:
D-10RXS3/4X15	FCOMPE01-7FT0155	6002194008415

### D-12XS

Equal Tee.  
Copper to Copper connections.



Product Code:	SAP Code:	Barcode:
D-12XS-15	FCOMPT15-7FT0155	6002194037149
D-12XS-22	FCOMPE22-7FT0155	6002194037156
D-12XS-28	FCOMPT28-7FT0155	6002194020516
D-12XS-35	FCOMPT35-7FT0155	6002194020523
D-12XS-42	FCOMPT42-7FT0155	6002194020530
D-12XS-54	FCOMPT54-7FT0155	6002194020547

## COMPRESSION FITTINGS

### D-15XS

#### Male Tee.

Copper to Copper to Male Iron connections.



Product Code: SAP Code:

Barcode:

D-15XS-15

FCOM2T15-7FT0155

6002194037163

D-15XS-22

FCOM1T22-7FT0155

6002194037170

15mm x 15mm x 1/2";  
22mm x 22mm x 3/4".

### D-17XS

#### Female Tee.

Copper to Copper to Female Iron connections.



Product Code: SAP Code:

Barcode:

D-17XS-15

FCOM3T15-7FT0155

6002194004110

D-17XS-22

FCOM2T22-7FT0155

6002194004127

15mm x 15mm x 1/2";  
22mm x 22mm x 3/4".

**D-29XS****Wallplate Tee.****Copper to Copper to Female Iron connections.**

Product Code:	SAP Code:	Barcode:
D-29XS-15	FCOM4T15-7FT0155	6002194037279

15mm x 15mm x 1/2".

**D-17RXS****Reducing Female Tee.****Copper to Copper to Female Iron connections.**

Product Code:	SAP Code:	Barcode:
D-17RXS22X1/2	FCOMPT02-7FT0155	6002194004134

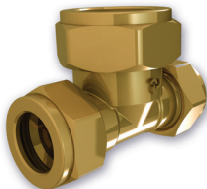
22mm x 22mm x 1/2".

## COMPRESSION FITTINGS

### D-279XS

Reducing Tee.

All ends Copper. Run equally reduced.



Product Code:    SAP Code:

Barcode:

D-279XS-15X22    FCOMPT12-7FT0155

6002194037255

D-279XS-22X28    FCOMPT13-7FT0155

6002194020714

### D-280XS

Reducing Tee.

All ends Copper. Run and Branch equally reduced.



Product Code:    SAP Code:

Barcode:

D-280XS-22X15    FCOMPT14-7FT0155

6002194037262



---

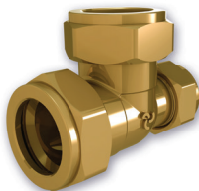
## COMPRESSION FITTINGS

---

### D-79XS

**Reducing Tee.**

**All ends Copper. One end on Run reduced.**

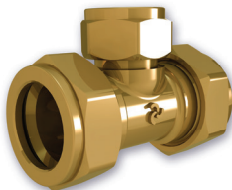


Product Code:	SAP Code:	Barcode:
D-79XS-22X15	FCOMPT27-7FT0155	6002194037446

### D-80XS

**Reducing Tee.**

**All ends Copper. Branch reduced.**

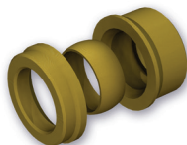


Product Code:	SAP Code:	Barcode:
D-80XS-22X15	FCOMPT29-7FT0155	6002194037477
D-80XS-22X22	FCOMPT30-7FT0155	6002194020974

## COMPRESSION FITTINGS

### Single Step Reducer (for adapting a fitting).

D-68XS



Product Code:	SAP Code:	Barcode:
D-68XS-22X15	FCOMPR21-7FT0155	6002194037422
D-68XS-28X22	FCOMPR23-7FT0155	6002194037439
D-68XS-35X28	FCOMPR24-7FT0155	6002194020875
D-68XS-42X35	FCOMPR25-7FT0155	6002194020882
D-68XS-54X42	FCOMPR26-7FT0155	6002194020899

### Multi-Step Reducer.

D-268XS

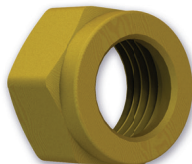


Product Code:	SAP Code:	Barcode:
D-268XS-28X15	FCOMPR05-7FT0155	6002194020615
D-268XS-35X22	FCOMPR06-7FT0155	6002194020639
D-268XS-42X22	FCOMPR07-7FT0155	6002194020653
D-268XS-42X28	FCOMPR08-7FT0155	6002194020660
D-268XS-54X22	FCOMPR09-7FT0155	6002194020684
D-268XS-54X28	FCOMPR10-7FT0155	6002194020691
D-268XS-54X35	FCOMPR11-7FT0155	6002194020707

## COMPRESSION FITTINGS

### Cap Nut.

64XS



Product Code:	SAP Code:	Barcode:
64XS-15/25	FCOM1P15-7FT0155	6002194146414
64XS-15/500	FCOM2P15-7FT0155	6002194146803
64XS-15L	FCOM3P15-7FT0155	6002194127901
64XS-22/25	FCOM1P22-7FT0155	6002194146407
64XS-22/250	FCOM2P22-7FT0155	6002194146797
64XS-22L	FCOM3P22-7FT0155	6002194127918
64XS-28	FCOMPP28-7FT0155	6002194030799
64XS-35	FCOMPP35-7FT0155	6002194030805
64XS-42	FCOMPP42-7FT0155	6002194030812
64XS-54	FCOMPP54-7FT0155	6002194030829

\*Quantity after the "/" denotes the quantity per pack

\*L denotes a single piece with a bar-code label

### Brass Compression Ring.

D-65XS



Product Code:	SAP Code:	Barcode:
D-65XS-15/10	FCOM5G15-7FT0155	6002194146391
D-65XS-15/1000	FCOM1G15-7FT0155	6002194147060
D-65XS-15/3000	FCOM6G15-7FT0155	6002194146780
D-65XS-15L	FCOM3G15-7FT0155	6002194122265
D-65XS-22/10	FCOM5G22-7FT0155	6002194146384
D-65XS-22/1500	FCOM6G22-7FT0155	6002194146773
D-65XS-22L	FCOM2G22-7FT0155	6002194122272
D-65XS-28	FCOMPG28-7FT0155	6002194020837
D-65XS-35	FCOMPG35-7FT0155	6002194020844
D-65XS-42	FCOMPG42-7FT0155	6002194020851
D-65XS-54	FCOMPG54-7FT0155	6002194020868

\*Quantity after the "/" denotes the quantity per pack

\*L denotes a single piece with a bar-code label

## COMPRESSION FITTINGS

Stop End.

D-23XS



Product Code:	SAP Code:	Barcode:
D-23XS-15	FCOMPS15-7FT0155	6002194037231
D-23XS-22	FCOMPS22-7FT0155	6002194037248
D-23XS-28	FCOMPS28-7FT0155	6002194020608

Brass Holderbat for Copper Tube.

62XS



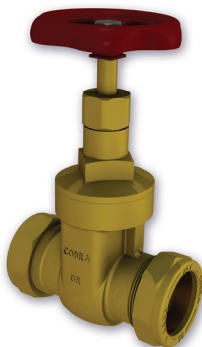
Product Code:	SAP Code:	Barcode:
62XS-15	FCOMPB15-7FT0155	6002194038924
62XS-22	FCOMPB22-7FT0155	6002194038931

Fullway Gate Valve.

Copper to Copper with non-rising spindle and guided wedge.



Product Code:	SAP Code:	Barcode:
1003/125-15	FGV10315-7FT0140	6002194027454
1003/125-22	FGV10322-7FT0140	6002194027461
1003/125-28	FGV10328-7FT0140	6002194027478
1003/125-35	FGV10335-7FT0140	6002194027485
1003/125-42	FGV10342-7FT0140	6002194027492
1003/125-54	FGV10354-7FT0140	6002194027508



**Use as an isolating valve ONLY**

SANS776, Class20.

## GATE VALVES

131

**Stop Tap.**

**Rough Brass. Copper to Copper.**

SANS226, Type 1 (Heavy duty).

Product Code:	SAP Code:	Barcode:
131-15	FSTAC1CR-7FT0048	6002194001867
131-22	FSTAC2CR-7FT0048	6002194001874
131-28	FSTACXCR-7FT0048	6002194038085

\* Also available: 231-15      FSTAC1C1-7FT0048      6002194016625

**Rough Brass,  
Copper to Copper;**  
SANS226, Type 1.



## COPPER TUBING FOR DOMESTIC PLUMBING

Tubes for Domestic Plumbing Services as per SABS 460

### Class 2 (Medium)

Nominal Size of Tube (mm)	Outside Diameter		Wall Thickness Class 2 Med. (mm)	Theoretical Mass kg/m Class 2	Maximum Working Pressure Mpa Class 2 Half Hard
	Max (mm)	Min (mm)			
15	15,045	14,955	1,0	0,392	7,54
22	22,055	21,945	1,0	0,588	5,00
28	28,055	27,945	1,2	0,900	4,72
35	35,070	34,930	1,5	1,407	4,72
42	42,070	41,930	1,5	1,701	3,81
54	54,070	53,930	2,0	2,912	4,06
76	76,170	76,030	2,0	4,150	2,85
108	108,070	107,930	2,5	7,385	2,50

### Class 1 (Light)

Nominal Size of Tube (mm)	Outside Diameter		Wall Thickness Class 1 Med. (mm)	Theoretical Mass kg/m Class 1	Maximum Working Pressure Mpa Class 1 Half Hard
	Max (mm)	Min (mm)			
15	15,045	14,955	0,70	0,280	5,16
22	22,055	21,945	0,90	0,532	4,50
28	28,055	27,945	0,90	0,683	3,50
35	35,070	34,930	1,20	1,136	3,74
42	42,070	41,930	1,20	1,371	3,03
54	54,070	53,930	1,20	1,774	2,40
76	76,170	76,030	1,50	3,133	2,12
108	108,070	107,930	1,50	4,473	1,49

## COPPER TUBING FOR DOMESTIC PLUMBING

### Class 0 (Light)

Nominal Size of Tube (mm)	Outside Diameter		Wall Thickness Class 0 Med. (mm)	Theoretical Mass kg/m Class 0	Maximum Working Pressure Mpa Class 0 Half Hard
	Max (mm)	Min (mm)			
15	15,045	14,955	0,60	0,242	4,93
22	22,055	21,945	0,75	0,447	4,18
28	28,055	27,945	0,80	0,610	3,59
35	35,070	34,930	1,20	1,137	4,20
42	42,070	41,930	1,20	1,372	3,48
54	54,070	53,930	1,20	1,775	2,69
76	76,170	76,030	1,50	3,133	2,38
108	108,070	107,930	1,50	4,473	1,67



Exceeds **SANS 1067** part 1 spec.

Heavy **DZR** Brass forging.

Superior **thread engagement** and number of turns.

**No Squeak** – torque up with confidence.

Supported by award winning **Cobra Assist** nationwide service team.

**4 decades of proven track-record.**

### **Generic Features and Benefits for Compression Pipe Fittings**

- \* Cobra compression pipe fittings are also a component of Cobra Safe MLP system (multi-layer pipe system). This system comprises of Cobra Safe PE-Xb Al PE-Xb multi-layer pipe, Cobra Safe pipe inserts and Cobra compression pipe fittings.
- \* Suitable for use with Class “0” hard drawn copper tube
- \* Unique bevel angle to ensure greatest ring compression
- \* Carefully controlled compression ring shore hardness for best sealing action.
- \* Extensive range of configurations.
- \* Metal to metal mechanical coupling makes the joint both permanent and suitable for applications where the heat and open flames of soldered connections can pose a hazard.
- \* Cobra compression fittings provide versatility, efficiency and jointing speed.
- \* Pipe work can be dismantled and re-assembled.
- \* Should you require replacement components, even after many years, you are assured of availability of components or sub-assemblies to ensure the continued operation of your Cobra fittings.
- \* Manufactured from corrosion resistant DZR brass.

# THE COBRA SAFE® MLP PIPE SYSTEM



COBRA Genuine



COBRA TeamAssist

---

## GENERIC FEATURES AND BENEFITS OF MLP SYSTEM

---

- Cost efficient and competitive when compared with traditional plumbing methods.
- Less susceptible to theft, no scrap metal value.
- No special crimping tools required, therefore no issues with incorrectly used tools.
- Used with standard, readily available Cobra compression fittings.
- Fits securely into standard sized holder bats.
- Available in 15mm, 22mm and 28mm pipe size (copper pipe OD) in 50 or 100mtr lengths for ease of transportation (28mm only in 50mtrs).
- Insulation properties reduce heat loss.
- Has the strength of copper tube with the corrosion resistance of polymer pipe.
- Chlorine and scale resistant.
- Savings generated as the system requires fewer fittings due to longer continuous pipe length and ability of MLP to hold tight bends.
- Flexible and lightweight, therefore facilitating ease of installation.
- Butt welded aluminium layer in pipe for strength and smooth joint line.
- The pipe aluminium layer retains rigidity at high temperatures thus maintaining the integrity of the system.
- The pipe aluminium layer is protected from corrosion by unique 'O' ring seal inserts.
- Test temperature 93°C.
- The maximum temperature rating for MLP Pipe system is 70°C.
- The maximum rated pressure for the MLP Pipe system is 10bar.

## MULTI LAYER PIPES

### MLP-15X50

Product Description:  
15mm PE-Xb Al PE-Xb  
multi-layer pipe x  
50mtr roll. SANS 21003

SAP Code:  
FML1PP15-6DT0155

Barcode:  
6002194126942

### MLP-15X100

Product Description:  
15mm PE-Xb Al PE-X  
multi-layer pipe x  
100mtr roll. SANS 21003

SAP Code:  
FMLPPP15-6DT0155

Barcode:  
6002194079484



### MLP-22X50

Product Description:  
22mm PE-Xb Al PE-Xb  
multi-layer pipe x 50mtr  
roll. SANS 21003

SAP Code:  
FML1PP22-6DT0155

Barcode:  
6002194126959

### MLP-22X100

Product Description:  
22mm PE-Xb Al PE-Xb  
multi-layer pipe x  
100mtr roll. SANS 21003

SAP Code:  
FMLPPP22-6DT0155

Barcode:  
6002194079507



### MLP-28X50

Product Description:  
28mm PE-Xb Al PE-Xb  
multi-layer pipe x 50mtr  
roll. SANS 21003

SAP Code:  
FML2PP28-6DT0155

Barcode:  
6002194079521

### MLP-28X100

Product Description:  
28mm PE-Xb Al PE-Xb  
multi-layer pipe x  
100mtr roll. SANS 21003

SAP Code:  
FMLPPP28-6DT0134

Barcode:  
6002194079552




**MLP-INS-15/200**

**Product Description:**  
Insert 15mm PEX  
Bulk Pack.

**SAP Code:**  
FMLPIN15-5ET0134

**Barcode:**  
6002194146810

**MLP-INS-15/25**

**Product Description:**  
Insert for 15mm  
PEX Pipe.

**SAP Code:**  
FML1IN15-5ET0134

**Barcode:**  
6002194146827


**MLP-INS-22/200**

**Product Description:**  
Insert 22mm PEX  
Bulk Pack.

**SAP Code:**  
FMLPIN22-5ET0134

**Barcode:**  
6002194146834

**MLP-INS-22/25**

**Product Description:**  
Insert for 22mm  
PEX Pipe.

**SAP Code:**  
FML1IN22-5ET0134

**Barcode:**  
6002194146841


**MLP-INS-28/200**

**Product Description:**  
Insert 28mm PEX  
Bulk Pack.

**SAP Code:**  
FMLPIN28-5ET0134

**Barcode:**  
6002194146858

**MLP-INS-28/25**







**Product Description:**  
Insert for 28mm  
PEX Pipe.

**SAP Code:**  
FML1IN28-5ET0134

**Barcode:**  
6002194146865

## INSTALLATION PROCEDURE

The COBRA-SAFE® MLP System includes, pipe fitting and insert. All three must be used together in order to carry the Cobra warranty

1.	2.	3.
		
Cut pipe to length using cutting tool for CobraSafe system (MLP-CUT).	Use pipe preparation tool for Cobra Safe system to ensure correct insert fit (MLP-PREPTOOL).	Compression nut is placed over Pe-x followed by compression ring then insert.
4.	5.	6.
		
Fit nut, compression ring and insert (MLP-INS).	Use desired Cobra compression fittings & repeat connection process.	Tighten joint: when tightening a compression fitting nut; tighten nut until the pipe is gripped & can only be rotated in the fitting by hand with difficulty, then, tighten the nut 1½ turns.

## NOTES

This image shows a single sheet of white paper with horizontal ruling lines. The lines are evenly spaced and run across the width of the page. There are no margins, text, or other markings on the paper.

20 Wright Street,  
Factoria,  
Krugersdorp, 1739  
South Africa

National After Sales Service Number: +27 (0) 861 21 21 21



## ONLINE PLATFORMS

Visit our websites and find an office/  
dealer/distributor closest to you.

### Websites:

<https://cobra.lixil.co.za/>

<http://www.lixil.co.za/>

### Social Media:



- @Cobrataps



- @CobraWatertechSA



PART OF LIXIL