



COBRA

HERE FOR YOU

SECURITY PRODUCTS BROCHURE

PART OF **LIXIL**

INTRODUCTION

Cobra has a complete range of heavy-duty security products which are suitable for high vandalism areas such as Police Stations, Prisons and Maximum Security Prisons.

Cobra has been an iconic brand for over 60 years. It's a household name that we recognise and associate with exceptional style, quality and reliability. In countless ways, Cobra has been here for you – for those little, everyday moments – for over half a century.

Now 100% owned by LIXIL, we have access to knowledge, capabilities, product platforms and manufacturing excellence of the largest and most innovative sanitaryware company in the world. This, combined with an immense wealth of local industry knowledge, experience and skills, will ensure we continue to make a significant impact in the industry.

WHY COBRA

- Still manufactured to highest Cobra quality that meets local standards.
- National After-sales service by qualified plumbers – On site repair or replacement within 48 hours. Local call centre 0861 21 21 21.
- Spares and parts widely available.
- Supplied standard with water saving technology.
- Local training support for your teams.
- Our products have a global footprint.



PUBLIC AREA - WC TOILET HIGH PRESSURE



Product Description:

Flush Master Valve & Connector - Chrome

Notes: Junior Econoflush front access box, chrome. Includes: back entry, galvanised steel underwall box, palm press button and rubber pan connector.
890mm x 320mm x 150mm

Product Code:
KF4-213



Product Description:

Buxton Toilet Seat - White

Notes: Bemis Buxton 2850CPT Sta-Tite seat white.
500mm x 400mm x 50mm

Product Code:
8515Z100



Product Description:

Parktown Toilet. Back-To-Wall - White

Notes: Parktown 90° back inlet closed rim back-to-wall pan.
580mm x 350mm x 400mm

Product Code:
431600WH

PUBLIC AREA - WC - TOILET LOW PRESSURE



Product Description:

Flush Master Valve & Connector - Chrome

Notes: Standard Econoflush front access box, chrome. Includes: back entry, galvanised steel underwall box with stainless steel faceplate, palm press button, horizontal flush pipe, and flush pipe elbow. SANS 1240.
890mm x 320mm x 150mm

Product Code:
KF3-413



Product Description:

Buxton Toilet Seat - White

Notes: Bemis Buxton 2850CPT Sta-Tite seat white.
500mm x 400mm x 50mm

Product Code:
8515Z100



Product Description:

Parktown Toilet. Back-To-Wall - White

Notes: Parktown 90° back inlet closed rim back-to-wall pan.
580mm x 350mm x 400mm

Product Code:
431600WH

PUBLIC AREA - URINAL



Product Description:

Lavatera Wall-Hung Urinal - White

Notes: Wall-hung urinal with back inlet. Supplied with a 38 mm chrome plated domical grating, a spreader (with a 20 mm diameter thread), and two hanger brackets. 385mm x 380mm x 600mm

Product Code:
705427WH



Product Description:

Flush Master Valve & Connector - Chrome

Notes: Junior Econoflush front access box, chrome. Includes: palm press button, tail pipe, ball-ostop, stainless steel faceplate & chassis, and galvanised steel underwall box. SANS 1240. 258mm x 235mm x 135mm

Product Code:
KF8-112

PUBLIC AREA - BASIN



Product Description:

Acrylic Basin Vanity - White

Notes: Acrylic vanity basin 600mm white. 600mm

Product Code:
BVS12030-2CQ



Product Description:

Acrylic Basin Vanity - White

Notes: Acrylic vanity basin panel 600mm white. 600mm

Product Code:
BPN03807-2CQ



Product Description:

Metering Taps - Chrome

Notes: Metering pillar tap, chrome. Includes: self-closing, non-hold open, flow controller with flow cycle of 1-20 seconds, 1/2" male inlet, backnut, washer, and streamline outlet for flow aesthetics. Excellent water-saving product. SANS 1808-9. 125mm x 76mm x 178mm

Product Code:
KM2-100

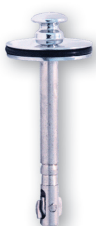


Product Description:

Traps & Overflows, Basin Wastes - Chrome

Slotted basin waste with plug, chrome-plated. Includes: 62mm diameter flange, 77mm long shank, and 11/4" BSP male outlet connection. Polymer back nut. 225mm x 175mm x 146mm

Product Code:
303



Product Description:

Waste, Trap & Overflow - Plug & Chain - Chrome

Notes: Anti-theft plug for basin wastes, chrome-plated. Includes: 72mm spindle and spindlelocking tab, and 39mm diameter plug. 130mm x 60mm x 113mm

Product Code:
309-32



Product Description:

Angle Valve - Chrome

Notes: Angle-regulating valve, with 350mm long flexi tube, chrome-plated. Includes: sliding wall flange, and 1/2" BSP male inlet x 1/2" BSP male outlet. 206mm x 65mm x 360mm

Product Code:
232/350

CELL BLOCK - WC - TOILET/BASIN COMBINATION HIGH PRESSURE



Product Description:

Flush Junior Valve & Connector - Chrome

Notes: Junior Flushmaster concealed flush valve, chrome. Includes: back entry, vandal-resistant guide tube, pushbutton assembly with pushrod, capillary-reducing coupling, rubber pan connector, and captive linkage. SANS 1240.
206mm x 65mm x 360mm

Product Code:

FJ4-203PR



Product Description:

Metering Valve & Connector - Chrome

Notes: Exposed, metering flow-control valve, chrome. Includes: ball-o-stop, non-hold open feature, and 3/4" BSP female connection end. SANS 1240.
130mm x 60mm x 113mm

Product Code:

KM1-00



Product Description:

Tap Spare Parts - Chrome/Copper

Notes: Concealed push-button assembly, chrome-plated. Includes: through-the wall extension copper tube, push rod, and locking back nut (exposed components).
206mm x 65mm x 360mm

Product Code:

C-KM9-15



Product Description:

Stainless Steel Toilet and Basin Combo – Oval

***STAINLESS STEEL PRODUCTS NOT INCLUDED**

CELL BLOCK - WC - TOILET/BASIN COMBINATION LOW PRESSURE



Product Description:

Flush Master Valve & Connector - Chrome

Notes: Standard Flushmaster toilet flush valve, concealed type, chrome. Includes: back entry, econoflush, pushbutton assembly with pushrod, rubber pan connector, integral vacuum breaker, and non-hold open feature. SANS 1240.
206mm x 65mm x 360mm

Product Code:

KF3-402PR



Product Description:

Metering Valve & Connector - Chrome

Notes: Exposed, metering flow-control valve, chrome. Includes: ball-o-stop, non-hold open feature, and 3/4" BSP female connection end. SANS 1240.
130mm x 60mm x 113mm

Product Code:

KM1-00



Product Description:

Tap Spare Parts - Chrome/Copper

Notes: Concealed push-button assembly, chrome-plated. Includes: through-the wall extension copper tube, push rod, and locking back nut (exposed components).
206mm x 65mm x 360mm

Product Code:

C-KM9-15

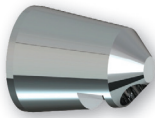


Product Description:

Stainless Steel Toilet and Basin Combo – Oval

***STAINLESS STEEL PRODUCTS NOT INCLUDED**

CELL BLOCK - BASIN



Product Description:

Vandal Resistant Basin Spout – Chrome

Notes: Cobra prison shower dia30 1hole chrome.

Product Code:

SP-71715000



Product Description:

Wall Mounted Prison Basin – Stainless Steel

*STAINLESS STEEL PRODUCTS NOT INCLUDED



Product Description:

Metering Taps - Chrome

Notes: Metering stop tap, chrome. Includes: self-closing, non-hold open, flow controller with a flow cycle of 1-20 seconds, 1/2" male inlet, and stainless steel flange. Excellent water-saving product, and can be easily installed. SANS 1808-9. 130mm x 60mm x 113mm

Product Code:

KM2-301

CELL BLOCK - SHOWER



Product Description:

Shower Head - Chrome

Vandalproof shower head, single-function, chrome. Includes: 1/2" BSP male inlet, 10L/min maximum flow restrictor, self-cleaning spray nozzle, and minimum flow pressure 50 kPa.

Product Code:

KP2-6



Product Description:

Metering Taps - Chrome

Notes: Metering stop tap, chrome. Includes: self-closing, non-hold open, flow controller with a flow cycle of 1-20 seconds, 1/2" male inlet, and stainless steel flange. Excellent water-saving product, and can be easily installed. SANS 1808-9. 130mm x 60mm x 113mm

Product Code:

KM2-301

CELL BLOCK – ELECTRONIC VANDAL RESISTANT SHOWER

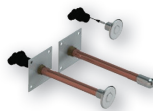


Product Description:

GROHE - Relexa Sports Head Shower 57mm Chrome

Notes: low aerosol emission heavy, cast model theft proof connection thread 1/2" projection 57mm flow limiter 9 l/min. and 12 l/min. GROHE DreamSpray perfect spray pattern GROHE StarLight chrome finish SpeedClean anti-limescale system Inner WaterGuide for a longer life suicide resistant design pipe union plug-in for wall connection.

Product Code:
28002000



Product Description:

Shower Sets - Chrome

Notes: Elect Demand set shower.
325mm x 210mm x 65mm

Product Code:
MH-SHOWER

CELL BLOCK - ELECTRONIC VANDAL RESISTANT WC



Product Description:

Cobratron Valves - Spare Parts

Notes: Concealed Touch Sensor for WC. Including: vandal proof actuator button, solenoid valve assembly, flushing time options. 235mm x 150mm x 95mm

Product Code:
EL-3012-WC



Product Description:

Basin Sets - Chrome

Notes: Elect Demand set basin.
403mm x 162mm x 70mm

Product Code:
MH-BASIN



Product Description:

Standard Pan offers a comfortable surface and is an extremely durable, solid surface product. It is specially designed for prisons and health care facilities that require a vandal resistant product. These Pans minimize potential harm to patients and prisoners by incorporating anti-ligature features.

***OPTIONAL PLUMBING FITTINGS**

CELL BLOCK - TRANSFORMER FOR ELECTRONICS



Product Description:

Cobratron Taps Spare Parts - White

Notes: Cobratron 10-channel mains power supply. Includes: complete transformer battery box, and internal uninterrupted power supply to the taps. 225mm x 175mm x 146mm

Product Code:
EL-TRANS-UPS

CELL BLOCK - THERMOSTATIC BLENDING VALVES FOR SHOWER



Product Description:

Mastertherm II Valves Thermostatic Mixing Valves - Brushed Chrome

Notes: Mastertherm II thermostatic temperature controller, brushed chrome. Includes: 1 1/4" male inlet x 1" female outlet. Can supply water to up to 14 showers, and the selected temperature can be 'locked in' rendering the temperature setting tamper. 300mm x 160mm x 110mm

Product Code:

KD2-204



Product Description:

Check Valve - Rough Brass

Notes: Spring-type check valve, with female connections, rough brass. Suitable for hydraulic working pressures up to 2000 kPa (non-shock), with an opening pressure of 10kPa. SABS 1808-10, DZR brass, JASWIC-listed. 210mm x 145mm x 85mm

Product Code:

1025-25



Product Description:

Ball Valve - Brass

Notes: Ball-O-Stop ball valve, with plastic-coated plated steel lever, brass. Includes: 1 1/4" female connections. Suitable for hot and cold water, air, gasoline, fuel oils, gas oils, and kerosene. 257mm x 194mm x 210mm

Product Code:

1090-32

CELL BLOCK - MLP PIPE



Product Description:

Cobra-Safe Piping & Plumbing Fittings, Multi-Layer Pipes - White

Notes: Cobra Safe multi-layer pipe in a 100m roll, white. Includes roll of multi-layer pipe, and prep tool. Cost-efficient and competitive when compared with traditional plumbing, and less susceptible to theft. No scrap metal value (PEX). 15mm

Product Code:

MLP-15X100



Product Description:

Cobra-Safe Piping & Plumbing Fittings, Multi-Layer Pipes - White

Notes: Cobra Safe multi-layer pipe in a 100m roll, white. Includes roll of multi-layer pipe, and prep tool. Cost-efficient and competitive when compared with traditional plumbing, and less susceptible to theft. No scrap metal value (PEX). 22mm

Product Code:

MLP-22X100



Product Description:

Cobra-Safe Piping & Plumbing Fittings, Multi-Layer Pipes - White

Notes: Cobra Safe multi-layer pipe in a 50m roll, white. Includes: roll of multi-layer pipe, and prep tool. Cost-efficient and competitive when compared with traditional plumbing, and less susceptible to theft. No scrap metal value (PEX). 28mm

Product Code:

MLP-28X50

CELL BLOCK - MLP PIPE INSERTS



Product Description:

**Cobra-Safe Piping & Plumbing
Fittings - Compression Fittings -
Black**

Notes: Insert 15mm pex bulk pack 200 pieces
black.

Product Code:
MLP-INS-15/200



Product Description:

**Cobra-Safe Piping & Plumbing
Fittings - Compression Fittings -
Black**

Notes: Insert 22mm pex bulk pack 200 pieces
black.

Product Code:
MLP-INS-22/200



Product Description:

**Cobra-Safe Piping & Plumbing
Fittings - Compression Fittings -
Black**

Notes: Insert 28mm pex bulk pack 200 pieces
black.

Product Code:
MLP-INS-28/200

KITCHEN - POTSINK



Product Description:

Carina Sink Mixer - Chrome

Notes: Carina wall-type sink mixer, with
aerated swivel outlet, chrome. Includes: 1/2"
BSP male inlets, and 1/2" heavy pattern/low
resistance for low pressure or high water
demand installations.
SANS 226 Type 1, DZR brass.
278mm x 126mm x 74mm

Product Code:
166/041CA



Product Description:

**Double bowl pot sink made from
stainless steel**

***STAINLESS STEEL PRODUCTS NOT
INCLUDED**

KITCHEN - SINK



Product Description:

Carina Basin Mixer - Chrome

Notes: Carina basin mixer, chrome. Includes: 2
x 1/2" female iron 400mm long flexible inlets,
6L/min maximum flow restrictor, slotted
waste, chain, stay, and mounting kit.
210mm x 145mm x 85mm

Product Code:
292CA

SPARES - TOILET HIGH PRESSURE



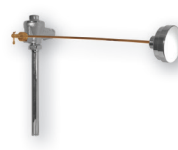
Product Description:

Flush Junior Valves & Connector - Spare Parts - Chrome

Notes: Toilet piston flush valve, chrome.
48mm x 68mm x 68mm

Product Code:

C-FJ8-10



Product Description:

Flush Junior Valves & Connector - Spare Parts - Chrome

Notes: Concealed push-button toilet/urinal flush valve, chrome.
48mm x 68mm x 68mm

Product Code:

C-FJ8-24



Product Description:

Spare Parts - Chrome/Copper

Notes: Concealed push-button assembly, chrome-plated. Includes: through-the wall extension copper tube, push rod, and locking back nut (exposed components).
206mm x 65mm x 360mm

Product Code:

C-KM9-15



Product Description:

Valve & Connector - Spare Part - Chrome

Notes: Top cover flush valve, chrome.
130mm x 60mm x 113mm

Product Code:

C-FJC1-2

SPARES - TOILET LOW PRESSURE



Product Description:

Flush Master Valve & Connector - Spare Parts - Chrome

Notes: Toilet piston flush valve, chrome.
130mm x 60mm x 113mm

Product Code:

C-FM8-30



Product Description:

Flush Master Valve & Connector - Spare Parts - Chrome

Notes: Top cover flush valve, chrome.
125mm x 76mm x 178mm

Product Code:

C-FMC1-2



Product Description:

Spare Parts - Chrome/Copper

Notes: Concealed push-button assembly, chrome-plated. Includes: through-the wall extension copper tube, push rod, and locking back nut (exposed components).
206mm x 65mm x 360mm

Product Code:

C-KM9-15



Product Description:

Flush Master Valve & Connector - Spare Parts - Chrome

Notes: Double cap seal flush valve, chrome.
48mm x 68mm x 68mm

Product Code:

C-FMC1-6

SPARES - BASIN



Product Description:

Spare Cartridge Assy Metering - Chrome

Notes: Metering valve cartridge. Includes: red and blue inserts. Suits all KM2 & #150 Mastermatic metering valves. 130mm x 60mm x 113mm

Product Code:

C-KM9-200



Product Description:

Taps Spare Parts - Brass

Notes: Head part, anti-clockwise closing, brass. 90mm x 80mm x 65mm

Product Code:

S-21-2ANTI



Product Description:

Taps Spare Parts - Brass

Notes: Headpart, clockwise closing, brass. 90mm x 80mm x 65mm

Product Code:

S-21-1CLOCK



Product Description:

Standard Star Headpart 1/2HP-3/4LP - Chrome

Notes: Star standard head part, G 1/2", 1/2" high-pressure to 3/4" low-pressure.

Product Code:

P-5

SPARES - GEYSER VALVE



Product Description:

Masterflo I - Valve & Connector - Pressure Control Valve - Brass

Notes: Masterflo 1 pressure control valve with integral expansion relief valve, 400kPa 3/4 mxxm. Includes: stainless steel seat, double mesh stainless steel strainer, and easy fit cartridge. SANS 198. 125mm x 76mm x 178mm

Product Code:

PA3-132



Product Description:

Stop Tap - Standard Brass

Notes: Stop tap, brass. Includes: 3/4" BSP female inlets, and 3/4" low resistance for low pressure or high water demand installations. SANS 226 Type 1, DZR brass, JASWIC-listed. 187mm x 149mm x 152mm

Product Code:

121-20



Product Description:

Vacuum Breaker - Brass

Notes: Vacubreak I double-jumper vacuum-breaker, brass. Includes: 3/4" male inlet. SANS 198, JASWIC-listed. 180mm x 180mm x 325mm

Product Code:

PB1-10



Product Description:

Closy/Kwikflo Valve & Connector - Pressure Control Valve - Brass

Notes: Kwikflo pressure control valve with integral expansion relief valve, 400kPa, brass. Includes: 3/4" BSP female inlet & outlet, stainless steel seat & strainer, and externally removable strainer. SANS 198. 350mm x 255mm x 340mm

Product Code:

PA1-1

SPARES - GEYSER VALVE



Product Description:

Closy/Kwikflo Valve & Connector - Pressure Control Valves - Brass

Notes: Pressure-control valve, brass. Includes: 100kPa 3/4" fxf system pressure, integral expansion relief valve, stainless steel seat, and externally removable strainer. SANS 198. 125mm x 76mm x 178mm

Product Code:
PA1-1L



Product Description:

Kwikflo Valve & Connector - Spare Parts - Chrome

Notes: Kwikflo 4 PRV repair kit. 130mm x 60mm x 113mm

Product Code:
C-PA1-10



Product Description:

Closy Valve & Connector - Spare Parts - Chrome

Notes: Closy C PRV repair kit. 266mm x 200mm

Product Code:
C-PA1-10L

SPARES - OUTSIDE HOSE TAP



Product Description:

Hose Bibtaps - Standard Brass

Notes: Hose bib tap, rusty brass. Includes: 3/4" hose union, wingnut, lining for 1/2" hose, 1/2" BSP male inlet, and 1/2" heavy pattern/low resistance for low pressure. SANS 226 Type 1. 187mm x 149mm x 152mm

Product Code:
108-15

20 Wright Street,
Factoria,
Krugersdorp, 1739
South Africa

National After Sales Service Number: +27 (0) 861 21 21 21
National Sales Email: sales.africa@lixil.com
National Projects Email: projects@lixil.com

ONLINE PLATFORMS

Visit our websites and find an office/dealer/distributor closest to you.

Websites:

<http://www.lixil.co.za/>

Social Media:



- @Cobrataps



- @CobraWatertechSA

BUILDING
SOUTH AFRICA
TOGETHER

Cobra and Vaal have a policy of continuous product development and advancements and therefore reserves the right to modify product specifications accordingly.



PART OF **LIXIL**